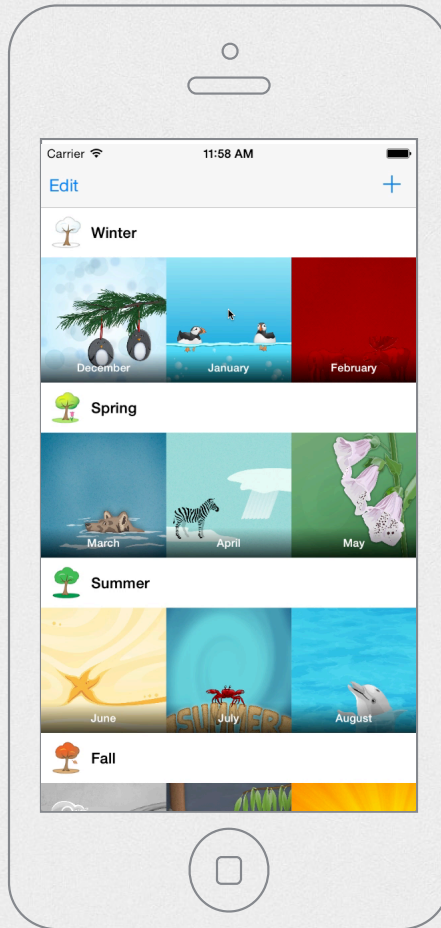
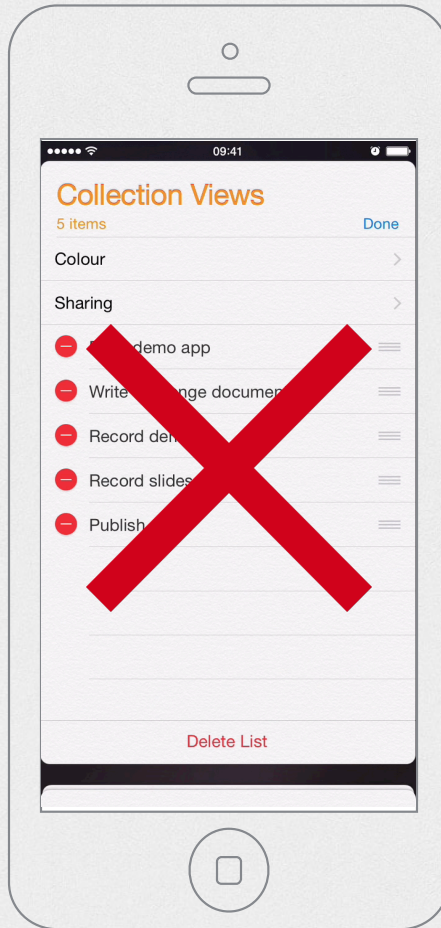


Collection Views

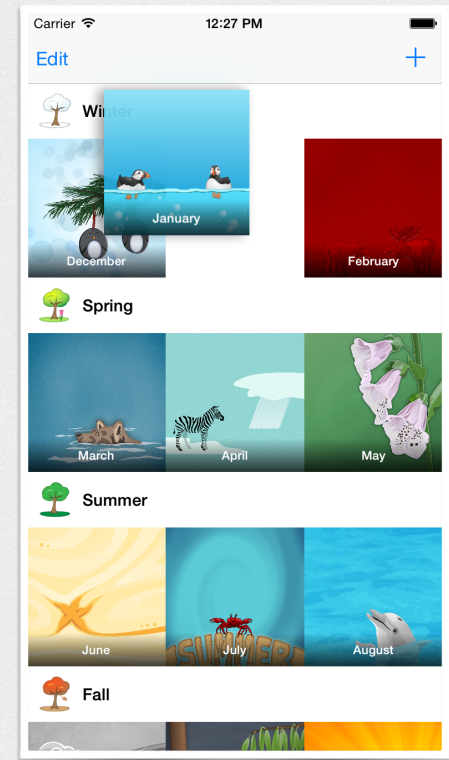
Moving Cells





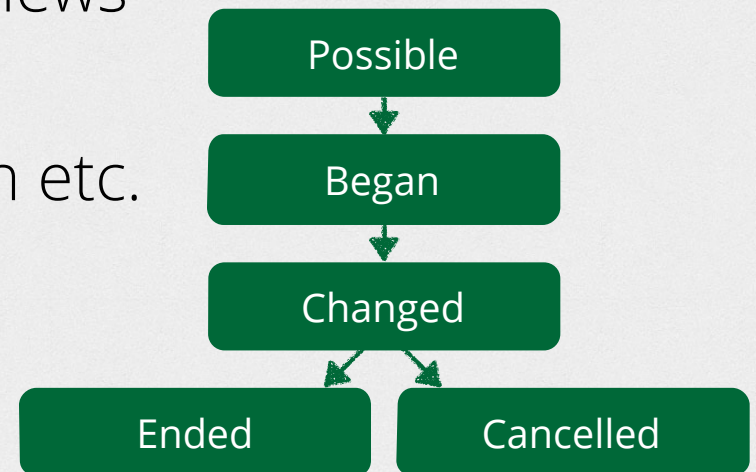
Moving Cells

- ⚙ Use UIGestureRecognizer
- ⚙ Update cell appearance
 - ⚙ Use view snapshot functionality
- ⚙ Pick up cell on long press
- ⚙ Move the cell so it follows the finger
- ⚙ Drop the cell when finger lifts

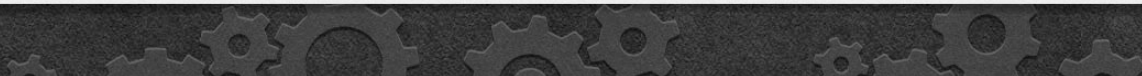


UIGestureRecognizer

- ⚙️ Associated with a view and it's subviews
- ⚙️ Detects touches
 - ⚙️ Subclasses for tap, long press, pan etc.
- ⚙️ Uses target-action pattern
- ⚙️ Discrete or continuous
- ⚙️ State machine



Demo



Challenge Time!

CHALLENGE ACCEPTED

